

SNPs R-L21, R-FGC3216, R-L459
SNPs R-DF13, R-CTS8221/22542

STRs Estimated ancestral haplotype for R-DF13 (values at CDYa and DYS 533 uncertain)

FTDNA Panel 1: 393 390 19/394 391 385a 385b 426 388 439 389-1 392 389-2
 13 24 14 11 11 14 12 12 12 13 13 29

FTDNA Panel 2: 458 459a 459b 455 454 447 437 448 449 464a 464b 464c 464d
 17 9 10 11 11 25 15 19 29 15 15 17 17

FTDNA Panel 3: 460 GATA 14 YCA 11a YCA 11b 456 607 576 570 CDYa CDYb 442 438
 11 11 19 23 16 15 18 17 36/37 38 12 12

Value assumed: 36 38

FTDNA Panel 4: 531 578 395S 395S 590 537 641 472 408S 511 425 413a 413b 557 594 436 490 534 450 444 481 520 446 617 568 487 572 640 492 565
 11 9 15 16 8 10 10 8 10 10 12 23 23 16 10 12 12 15 8 12 22 20 13 12 11 13 11 11 12 12

FTDNA Panel 5: 710 485 632
 35 15 9

FTDNA Panel (cont.): 495 540 714 716 717 505 556 549 588 522 494 533 636 575 638 462 452 445 GATA A10 463 441 GGA AT 1907 525 712 593 650 532 715 504 513 561 552 726 635 587 643 497 510 434 461 435
 16 12 25 26 19 12 11 13 12 11 9 12/13 12 10 11 11 30 12 13 24 13 10 10 20 15 19 19 24 17 12 15 24 12 29 18 10 14 17 9 12 11

Value assumed: 13

LEGEND (and key to highlighting):

STR Mutations:

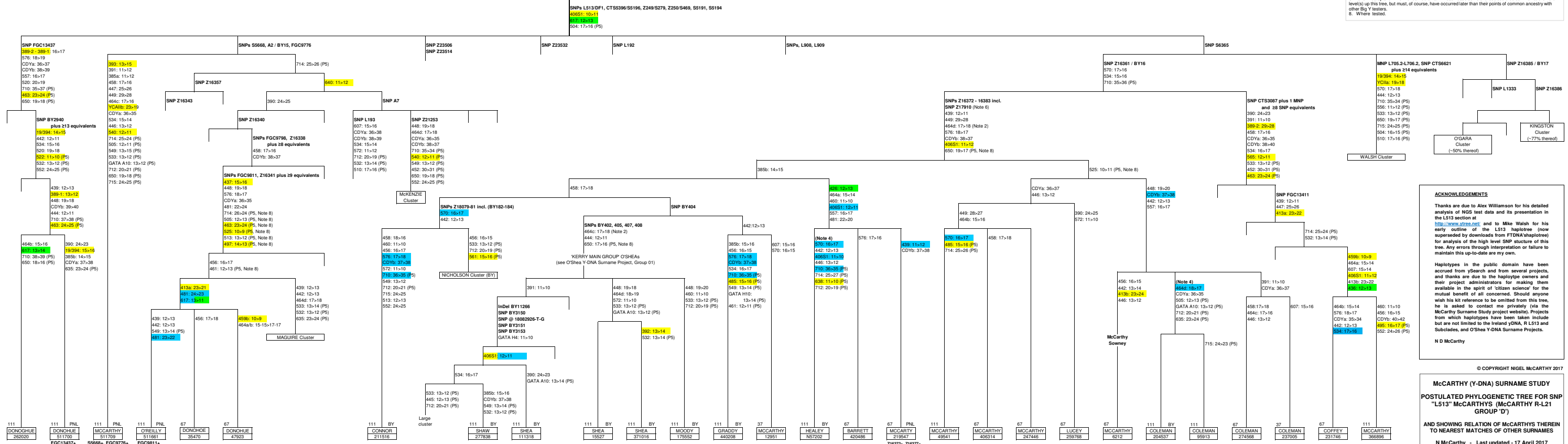
- Very slow moving STR markers (very low mutation rates) or rare multi-step mutation
- "Slow moving" STR markers (low mutation rates)
- Postulated STR back-mutation

Participant kit number and testing details:

- No. of STR markers for which results have been published
- Has taken BigY test (BY)
- Results not yet available
- or YE, YP, FO = Has taken Y Elite or Y Prime test with FGC, or other "full" Y-genome test elsewhere.
- (YE, YP, FO) Results not yet available.
- PNL = Has taken FTDNA Pack or Yseq Panel Test.
- Participant ancestral surname / kit no.

NOTES:

- Where SNP and STR mutations are grouped, these could have occurred in any order.
- It is possible that a 15-15-17-17 to 15-15-18-18 mutation first occurred early on at DYS 464.
- Further breakdown in final sub-branches except those with McCarty's not shown (may include back mutations).
- Excluding the DYS19 region, Alex Williamson's analysis of Big Y results identifies 11 "clear-cut" "private" SNPs for Healey and 14 for 20K537 Coleman. In each case some of these could be common to the next level(s) up this tree, but must, of course, have occurred later than their points of common ancestry with other Big Y testers.
- Where tested.



© COPYRIGHT NIGEL MCCARTHY 2017

McCarthy (Y-DNA) Surname Study
 POSTULATED PHYLOGENETIC TREE FOR SNP "L513" MCCARTHY (MCCARTHY R-L21 GROUP 'D')

AND SHOWING RELATION OF MCCARTHY'S THEREIN TO NEAREST MATCHES OF OTHER SURNAMES

N D McCarthy - Last updated - 17 April 2017